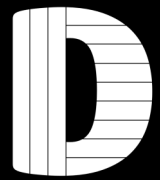


Rialto Arched Decorative Garden Bridge



Component List

6 x Newel Posts	(85mm x 85mm)	1200mm	(A)
2 x Curved Support Beam	(95mm x 44mm)	1800mm	(B)
14 x Walkway Boards	(120mm x 28mm)	900mm	(C)
4 x Angle Cut Handrails	(85mm x 35mm)	790mm	(D)
12 x 150mm Carriage Bolts (Inc Nut & Washer)			(FIX 1)
56 x 60mm Green Coated Screws			(FIX 2)
4 x Handrail Brackets (Pairs Inc Screws)			(FIX 3)

Tools Required

Drill Driver
PZ2 Driver Bit
10mm Socket / Spanner
10mm Drill Bit
Pencil
Tape Measure
Spirit Level

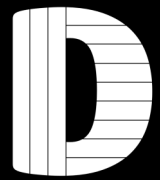


A minimum of two people are required to assemble this product.

All images are for illustration only. Please see individual item listings for actual item specifications.

Page 1 of 6

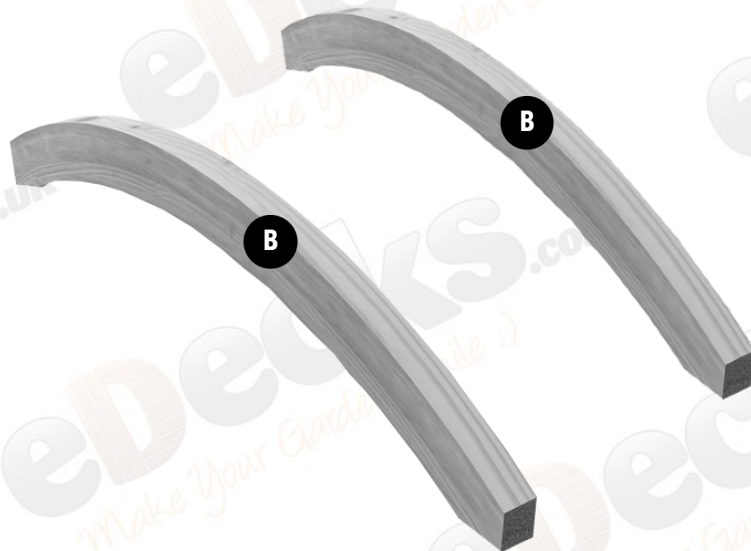
Rialto Arched Decorative Garden Bridge



Step 1

To prevent splits, drill a pilot hole before driving screws

To begin your build, first start by placing the 2 x Curved Support Beams (B) down on the ground opposite one another as per the diagram below.



Step 2

Starting at one end, fasten down the first Walkway Board (C), using 2 x 60mm Green Coated Screws (FIX 2) per side, driving through the board and into the Curved Support Beam (B) below.

The edge of the board should fit flush with the support beams underneath.

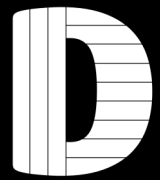
For stability when building, we would suggest then fitting the opposing end starter board in the same way.

Repeat the process all along the support beams until they are fully covered, using approx. 10mm spacing gaps in between so that the boards are spaced evenly.



All images are for illustration only. Please see individual item listings for actual item specifications.

Rialto Arched Decorative Garden Bridge



Step 3

To prevent splits, drill a pilot hole before driving screws

With the walkway completed, you can now move on to installing the 6 x Newel Posts (A) that the Handrails (D) will be attached to later.

You will need to drill holes in the correct place, through the newel and the support beams using a 10mm drill bit.

The Newel Posts (A) are attached using 2 x 150mm Carriage Bolts (FIX 1) per post as indicated below, with the included washer attached to the rear to help the nut pull the bolt tight and secure.



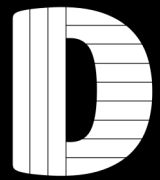
The end Newel Posts (A) should be positioned so that they are flush with the Curved Support Beams (B).

To ensure the middle Newel Post (A) is in the correct position, we recommend as well as using a tape measure to find the centre, using one of the Handrails (D) between the end and middle post as a guide to ensure a snug fit when they are installed in the next step.



All images are for illustration only. Please see individual item listings for actual item specifications.

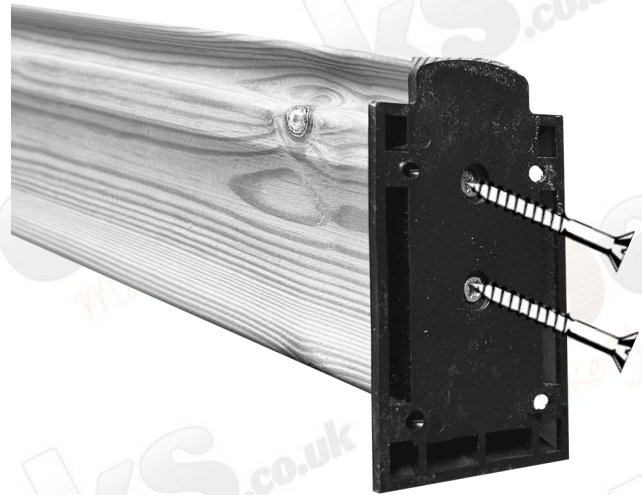
Rialto Arched Decorative Garden Bridge



Step 4

To prevent splits, drill a pilot hole before driving screws

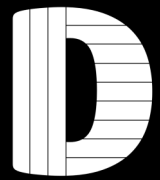
Using the screws provided, the Handrail Brackets (FIX 3) these be attached to the end of each Angle Cut Handrails (D) screwing through the bracket and into the handrail.



Repeat the process on all handrails at both ends, the finished product should look as per the below diagram.



Rialto Arched Decorative Garden Bridge



Step 5

To prevent splits, drill a pilot hole before driving screws

With the Newel Posts (A) fixed in place the Handrails can be attached using the screws provided. Simply slot in between the newels and fix into place.

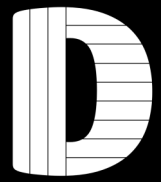
We recommend attaching the top of the Handrail Brackets (FIX 3) approx. 50mm below the bottom rib on the top of the Newel Post (A).

The height which you choose to install the handrails is at your discretion but we recommend as above.



All images are for illustration only. Please see individual item listings for actual item specifications.

Rialto Arched Decorative Garden Bridge



**Enjoy your new Rialto Arched
Decorative Garden Bridge!**

All images are for illustration only. Please see individual item listings for actual item specifications.

Page 6 of 6